

22 April 2008, Mark Silver ([ms@igage.com](mailto:ms@igage.com))

**Q: How to Program the Internal Radio in a PM500**

**A: Daisy-chain through port A on the PM500**

---

Proceed as with ZMax, (see Phil's 'ZMax PDL Radio configuration...' FAQ)

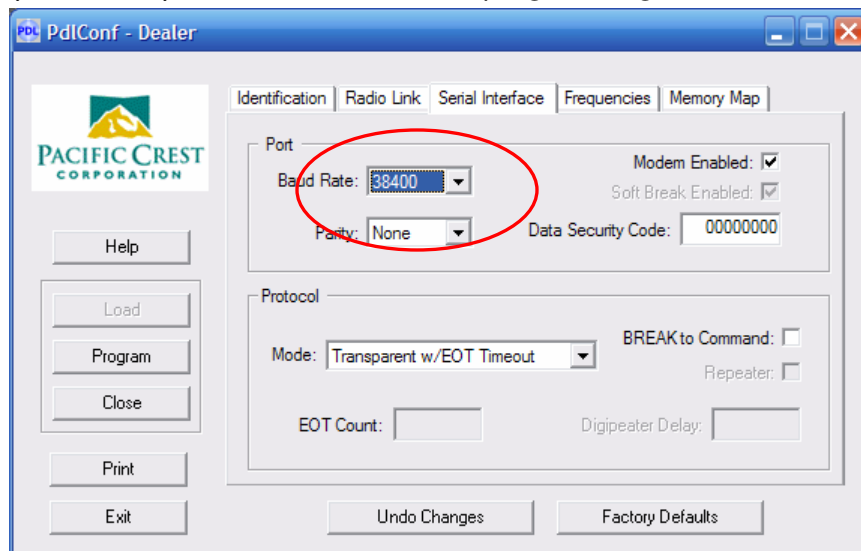
Issue these commands, in this order, using Evaluate. (DO NOT send the SPD command listed in ZMax programming documents):

```
$PASHQ,RID  
$PASHS,CTS,A,OFF  
$PASHS,DSY,D,A  
$PASHS,DSY,A,D
```

After you send the RID command, make sure you get an ACK back from the PM500. Don't worry about changing the PM500 port A baud rate to 38.400, the PM500 will translate the baud for you.

Close Evaluate and then start the Pac Crest Dealer Config program. Press the Load button. If it does not capture the modem the first time, press the Load button again. (it always takes two tries for me to capture.)

Make the settings that you want. **BUT...ABSOLUTELY, DO NOT** change the 'Port Baud Rate' to any value other than 38400 or you will lock up your radio. Not even I (Mark Silver) have a CMOS cable for programming the radio.



Press the 'Program' button to store your settings.

Reboot the PM500.

**IMPORTANT: You have to do the three-fingered-reset when you power on for the PM500 to reload the channel list from the PacCrest radio! If you don't do a reset, the radio will have the new channel list and the PM500 will have the old channel list.**