

Magellan MMCX FAST Field Terminal

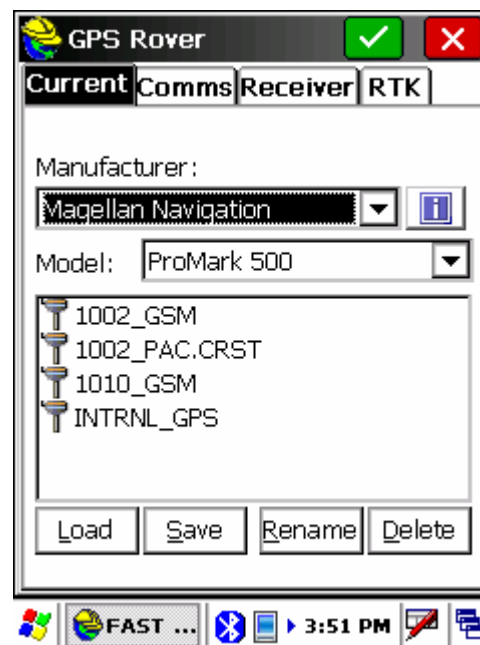
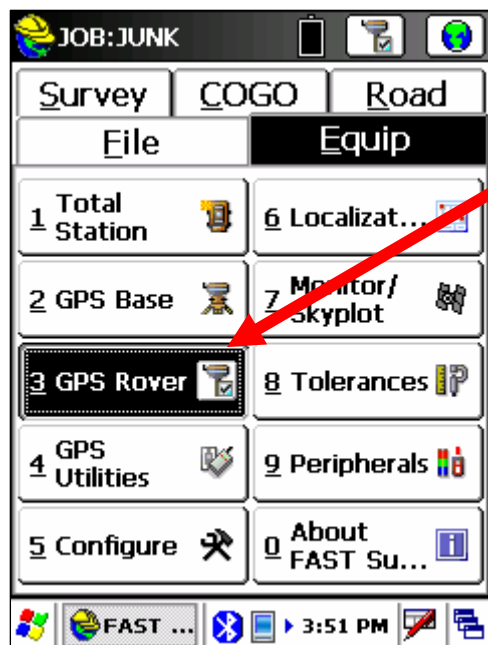
Configuring FAST to be Used As a Handheld Controller

By: Ben Sullivan – August 21, 2008

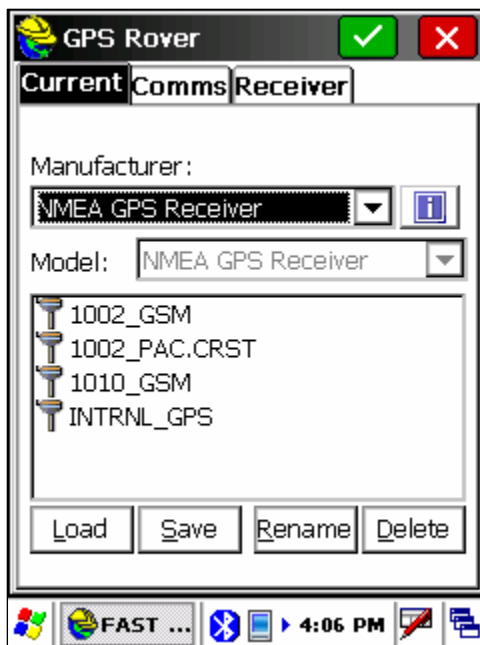
User summary:

This guide is intended to help users configure their MMCX FAST controller to be used as a stand-alone sub-meter data controller using FAST Survey.

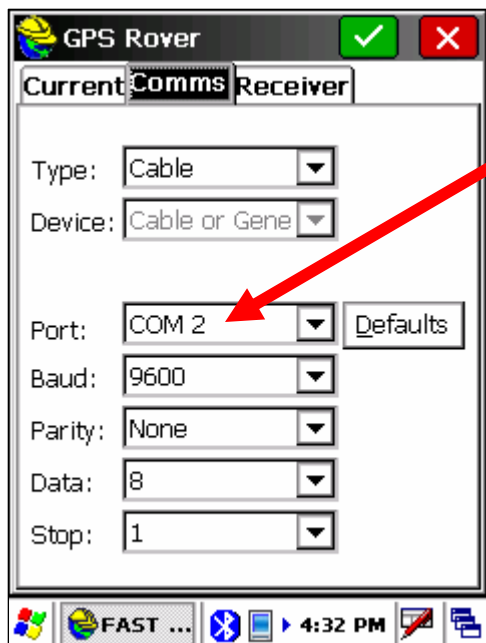
1. Start FAST, select appropriate Job type. Existing Jobs can be used as well.



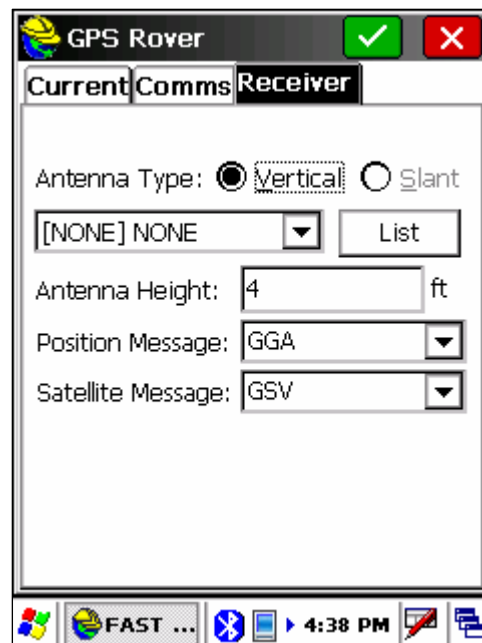
2. Change the Manufacturer to the following:



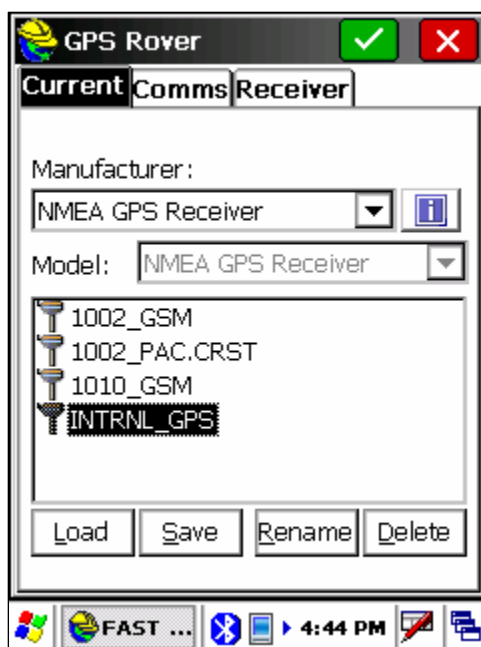
3. Change the COM settings to match the following:



Com02 is the internal GPS port. Must be set in order for FAST to work.



4. After the settings have been made, return to the 'Current' tab to save the profile for future use:



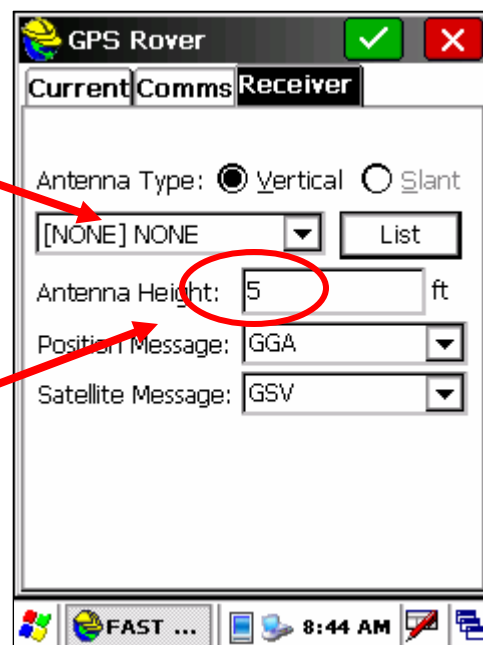
5. Return to the home screen, check the EQUIP Tab, now check "Monitor Skyplot" to check the settings and wait to see "DGPS" as the solution type.

6. ** OPTIONAL USE OF EXTERNAL ANTENNA **

- a. For instances where better tracking capabilities are needed or simply better real-time accuracy, the user can use a NAP100 ProMark3 antenna, for example.

Use the dropdown box, or the 'List' softkey to select antennas by manufacturer easier.
Note: Refer to the FAST or PM500 Ref Manual for NMEA message types, but suggest leave as is.

Antenna height needs to be set whether using the Internal antenna or external.



GPS Rover

Current Comms Receiver

Antenna Type: ☒ Vertical ☐ Slant

[NONE] NONE List

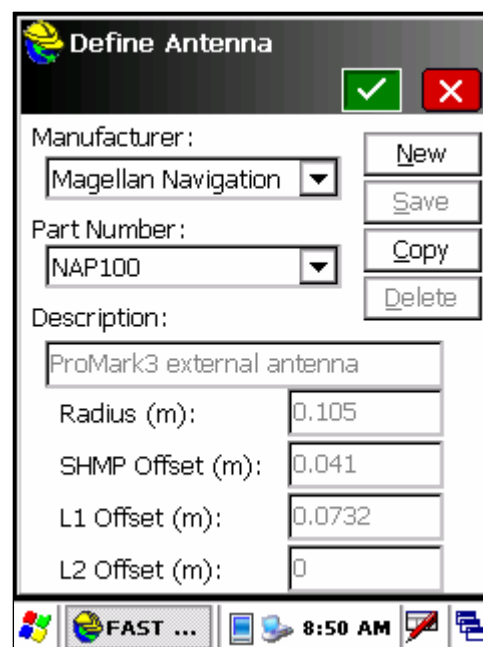
Antenna Height: 5 ft

Position Message: GGA

Satellite Message: GSV

FAST ... 8:44 AM

Use the dropdowns to select antenna types easier, or the user can also enter in a custom antenna type as well if not published in the list.



Define Antenna

Manufacturer: Magellan Navigation New

Part Number: NAP100 Save

Description: ProMark3 external antenna Copy

Radius (m): 0.105 Delete

SHMP Offset (m): 0.041

L1 Offset (m): 0.0732

L2 Offset (m): 0

FAST ... 8:50 AM

7. **IMPORTANT NOTE:** The user must cable the external antenna prior to powering on the MMCX system in order for the external antenna to be used.