

Magellan PM500 – CDMA Setup using FAST

By: Ben Sullivan – November 10, 2008


CELL PHONE INFO:

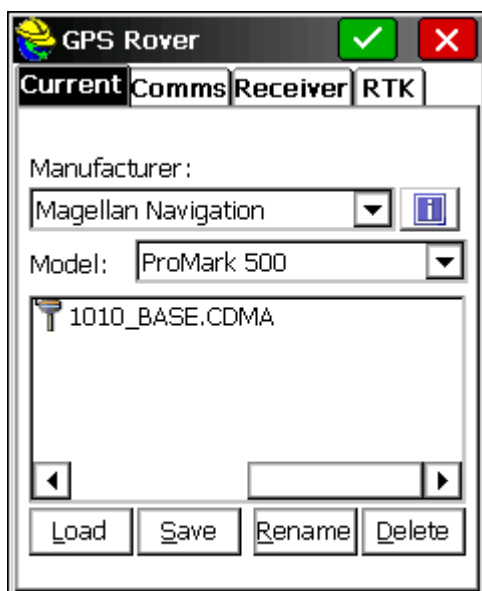
1. Verizon Blackberry 8830, account has tethering option supporting Dial-Up Networking option
2. Bluetooth PIN: **1111**
3. Modem connection credentials
 - a. Phone number dial string: **#777**
 - b. Username: **(10digitphone#)@vzw3g.com**
 - c. Password: **vzw**

PM 500 CDMA Protocol:

1. Setup BT partnership with Cell phone and MMCX
2. Setup “Network and Dialup Connections profile on MMCX using settings above.
 - a. Make the dial-up connection to establish a wireless web connection

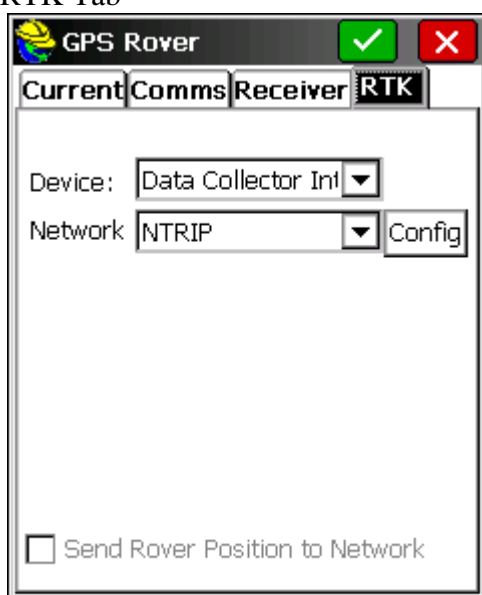


- b. 
3. (Make sure to click “Save password” box.
4. Once connected “Hide” status box.
5. Backup to desktop screen, then start FAST Survey
6. Goto **Equip → GPS Rover**.
7. Setup CDMA profile future work as opposed to GSM:



a.

8. Under RTK Tab



a.

9. Configure NTRIP as done with GSM connection

10. OK to connect to Network.