



Firmware Release Notes

Survey

Date: November 28, 2014
Product: ProMark 700, MobileMapper 300
Subject: ProMark 700 V4.91 Firmware Release

Introduction:

This document provides the firmware release notes of the [ProMark 700 and MobileMapper 300 V4.91](#). This version does not require a new registration code.

Upgrade procedure

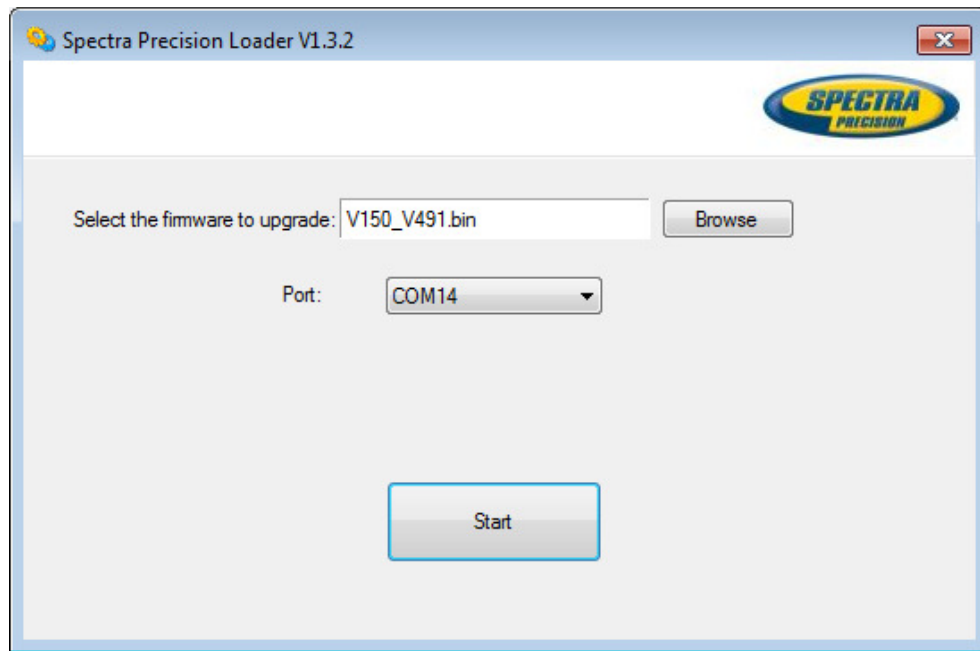
Note: MobileMapper 300 is shipped from release 1 with V4.91 so do not require any upgrade

Prerequisites

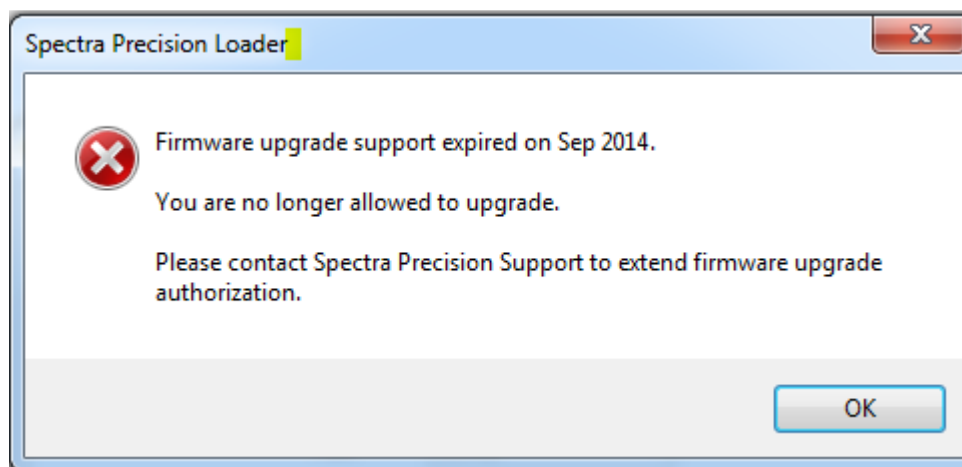
- Power the ProMark 700 GNSS receiver from external power supply to prevent power loss during the upgrade
- Put the GNSS receiver close to the PC to secure the Bluetooth connection and prevent connection loss during the upgrade
- Make sure that the warranty period is not expired (required for any firmware update). If so, contact your Spectra Precision Support.

The procedure to upgrade the receiver is the following, you will find all required files on Trimble partner site under ProMark700/Technical support/download

1. Install the PC software [Spectra Precision Loader V1.3.2.exe](#) on your computer
2. Copy the [V150_V491.bin](#) file on your computer
3. Connect the ProMark 700 to your computer via Bluetooth
4. Launch the Spectra Precision Loader tool

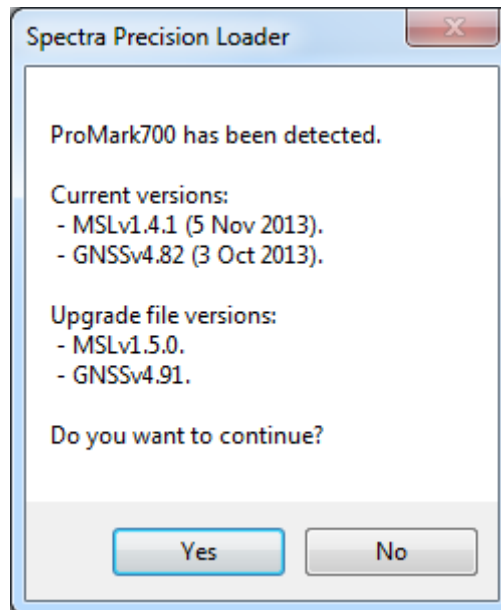


5. Use the Browse button to select the new ProMark 700 firmware (V150_V491.bin)
6. Select the Port and click on Start button
7. If the following warning message appears, please contact your Spectra Precision support to extend your receiver warranty period.



Note : Your Spectra Precision support will provide you an option code to extend the warranty period. Follow the “Upgrade Option” procedure to load this option code, and start again the ProMark 700 FW upgrade process.

8. If your ProMark 700 is still under warranty period, the following window appears



9. Press the Yes button and follow instructions.

Firmware list and versions

General version number: [V4.91](#)

The software compatible with ProMark 700 V4.91:

- FAST Survey: [4.2](#)
- Survey Pro: [5.5](#)
- Survey Office (32-bits): [2.96](#)
- Survey Office (64-bits): [3.21](#)

New features

- CenterPoint RTX services via Internet (IP)
- UHF base & rover modes