



Firmware Release Notes

Survey/GIS

Date: October 17, 2007
Product: PM3
Subject: OS Release Maintenance Version V2.16
Number: PM3OS2007_10 revA

Introduction:

The PM3 OS maintenance version V2.16 is a no-cost firmware update for the PM3 receiver. It fixes some firmware defects that have been reported by users, dealers and Magellan Navigation Technical Support staff.

This OS version should be used with GPS firmware version **P010** and Surveying&Mapping software applications **V2.11**.

All three programs are available for free download from [ftp.magellangps.com](ftp:magellangps.com) in the following folders:

- Operating system version 2.16 :/Land Survey/PM3/Firmware/Operating System
- GPS firmware version P010 :/Land Survey/PM3/Firmware/GPS firmware
- Software version 2.11 :/Land Survey/PM3/Software/ Surveying&Mobilemapping

Upgrade procedure

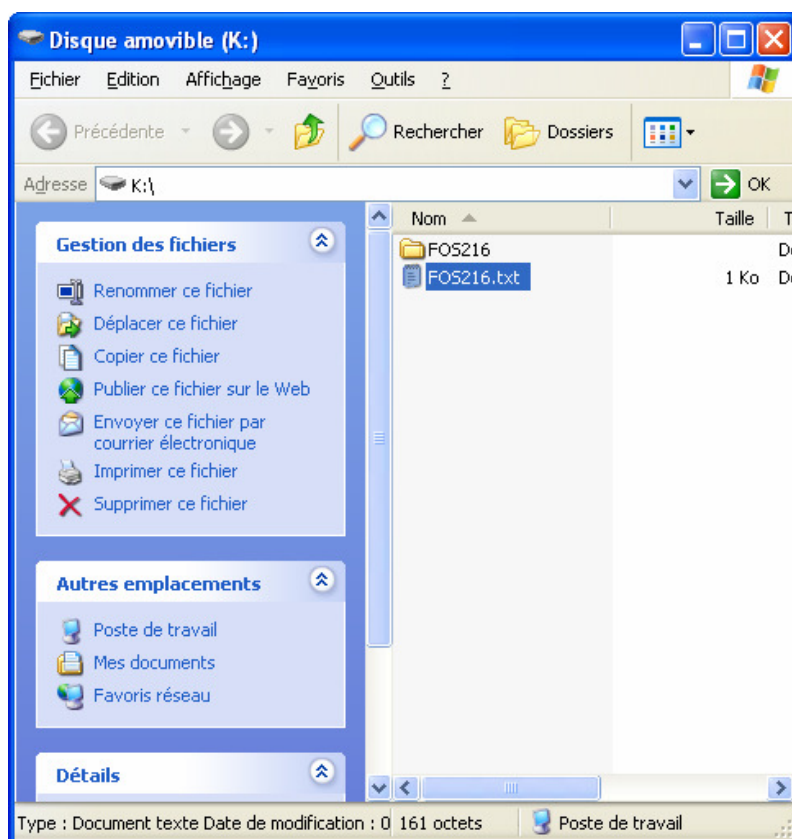
Warning: After upgrading the OS, you will have to reinstall the application firmware. If you already are a user of the RTK option and FAST Survey, you will need to re-enter the activation code for each of these options after upgrading the firmware. So if you have lost these codes, please do the following before upgrading: run successively the “unlock RTK option” and “Unlock Fast Survey” utilities so you can view and write down each of these codes.

The upgrade procedure is as follows:

The upgrade procedure is as follows:

1. Go to the [ftp.magellangps.com](ftp:magellangps.com) FTP site and download the PM3 OS 2.16 firmware from the /Land Survey/PM3/ Firmware/Operating System folder to your office computer.
2. Extract the files from the Zip file, making sure you preserve the folder structure while doing this(see below).
3. Insert a SD card into the card reader of your office computer. Using Windows Explorer on your PC, navigate to the drive used by the card reader, right-click on it and select the Format option. Select FAT32 as the file system for cards 64 MB or larger. Formatting the card will delete all its data.

4. Copy the unzipped files and folders to the SD Card. The content of the SD card should then be as follows:



5. Remove the SD card from the card reader and insert it into the PM3
6. On the PM3, double tap Utilities and then AutoLoader.
7. Select the FOS216.txt file and tap OK. Let the unit complete the installation and restart.
8. At the end of the installation, restore the factory settings by pressing simultaneously the following keys LOG+IN+MENU.

New features

None

Resolved Problems/Improvements

1. Connection with new mobile phone generation
2. Blue tooth Improvement

Known Issues

- The **MM Beacon is NOT supported by OS 2.16**: If you want to use the Beacon, you must revert to the V1 release (OS V1.57 and software application V1.21).
- The Windows CE USB drivers used by PM3 are not compatible with **Windows Vista** (These drivers are not supported by Windows Vista).