

iGage Mapping Corporation • 1545 South 1100 East #1 • Salt Lake City UT 84105
Voice +1 801 412-0011 +1 888 450-4922 • Fax +1 801 412-0022 +1 888 450-4983 • www.igage.com

Configuring FAST Survey (or SurvCE) for Use with MM100/PM100/PM200 Internal GPS Receiver

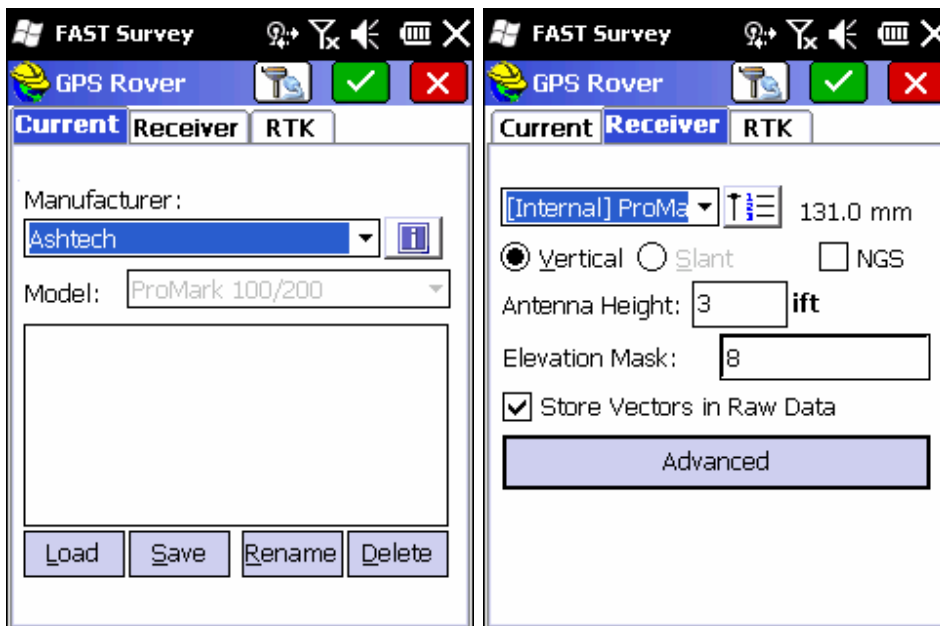
Date: 14 August 2012

By: Mark Silver, ms@igage.com

Often ¼ meter accuracy is 'good enough' for staking. The MobileMapper 100, ProMark 100 and ProMark 200 will achieve this real-time accuracy with FAST Survey or SurvCE.

However there are a few settings required to optimize real-time performance.

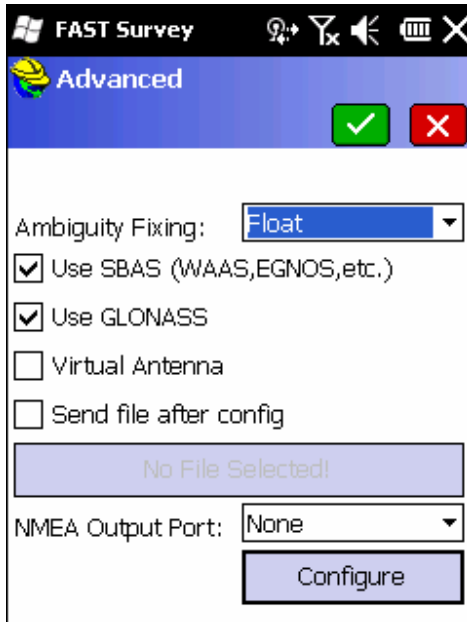
First, under Equip: GPS Rover:



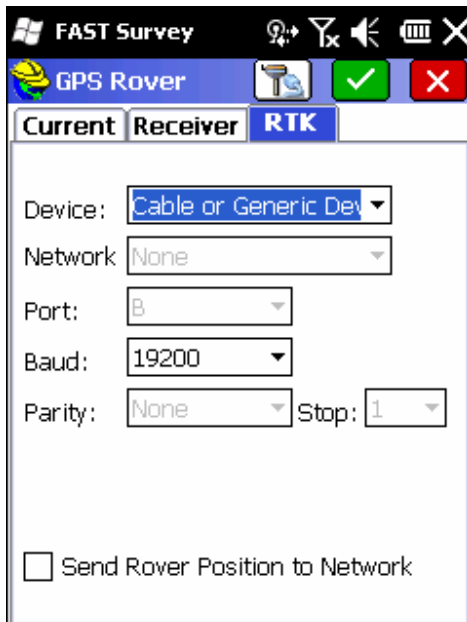


iGage Mapping Corporation • 1545 South 1100 East #1 • Salt Lake City UT 84105
Voice +1 801 412-0011 +1 888 450-4922 • Fax +1 801 412-0022 +1 888 450-4983 • www.igage.com

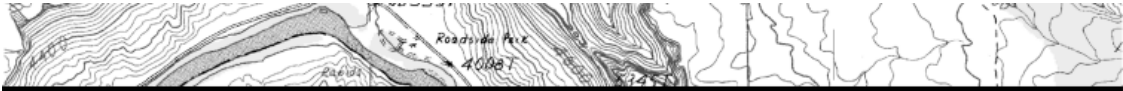
Click 'Advanced', if GLONASS is enabled on the receiver then check the 'Use GLONASS' checkbox. Set the Ambiguity Fixing to Float:



Finally click on the green check mark and configure RTK parameters:

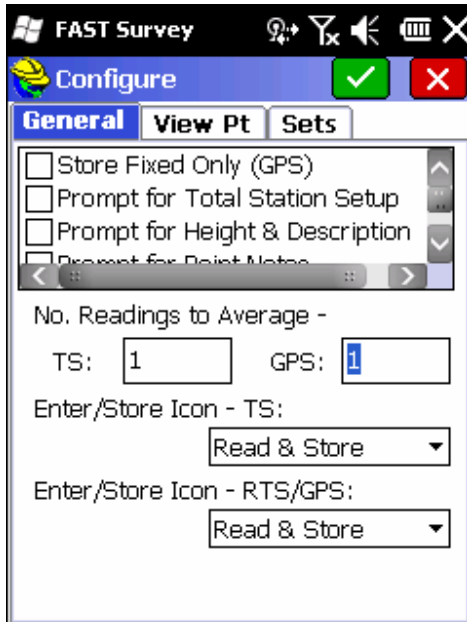


Click on the green check mark to return to the main menu.

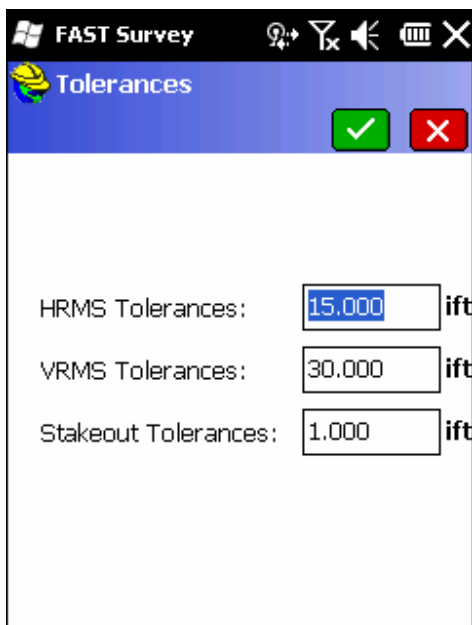


iGage Mapping Corporation • 1545 South 1100 East #1 • Salt Lake City UT 84105
Voice +1 801 412-0011 +1 888 450-4922 • Fax +1 801 412-0022 +1 888 450-4983 • www.igage.com

Next click on 'Equip: 5. Configure', make sure 'Store Fixed Only (GPS)' is UNCHECKED:



Next configure the tolerances: "Equip: 8. Tolerances":



You should now be 'Good-To-Go!' Make sure you wait for a SDGPS signal (not Autonomous) before storing or staking points.